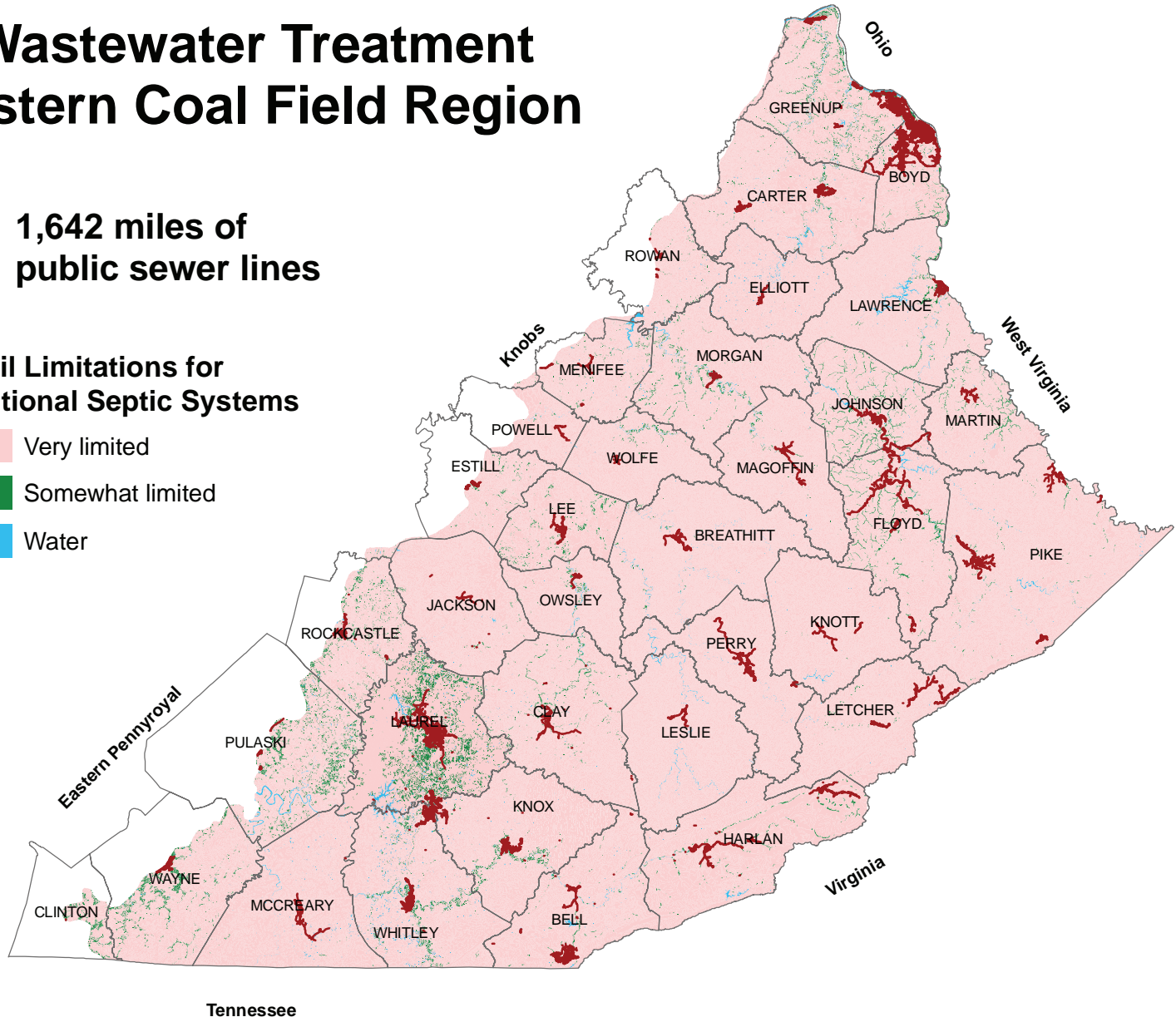


# Wastewater Treatment Eastern Coal Field Region

— 1,642 miles of  
public sewer lines

## Soil Limitations for Conventional Septic Systems

- Very limited
- Somewhat limited
- Water



**There are nearly 7 times as many miles of water lines in the region as there are of sewer lines. The bedrock and soils of the region are, in general, not suitable for traditional on-site septic systems. Innovative treatment systems for homes outside areas of public sewer must be installed to prevent continued contamination of water supplies, lakes, and streams.**